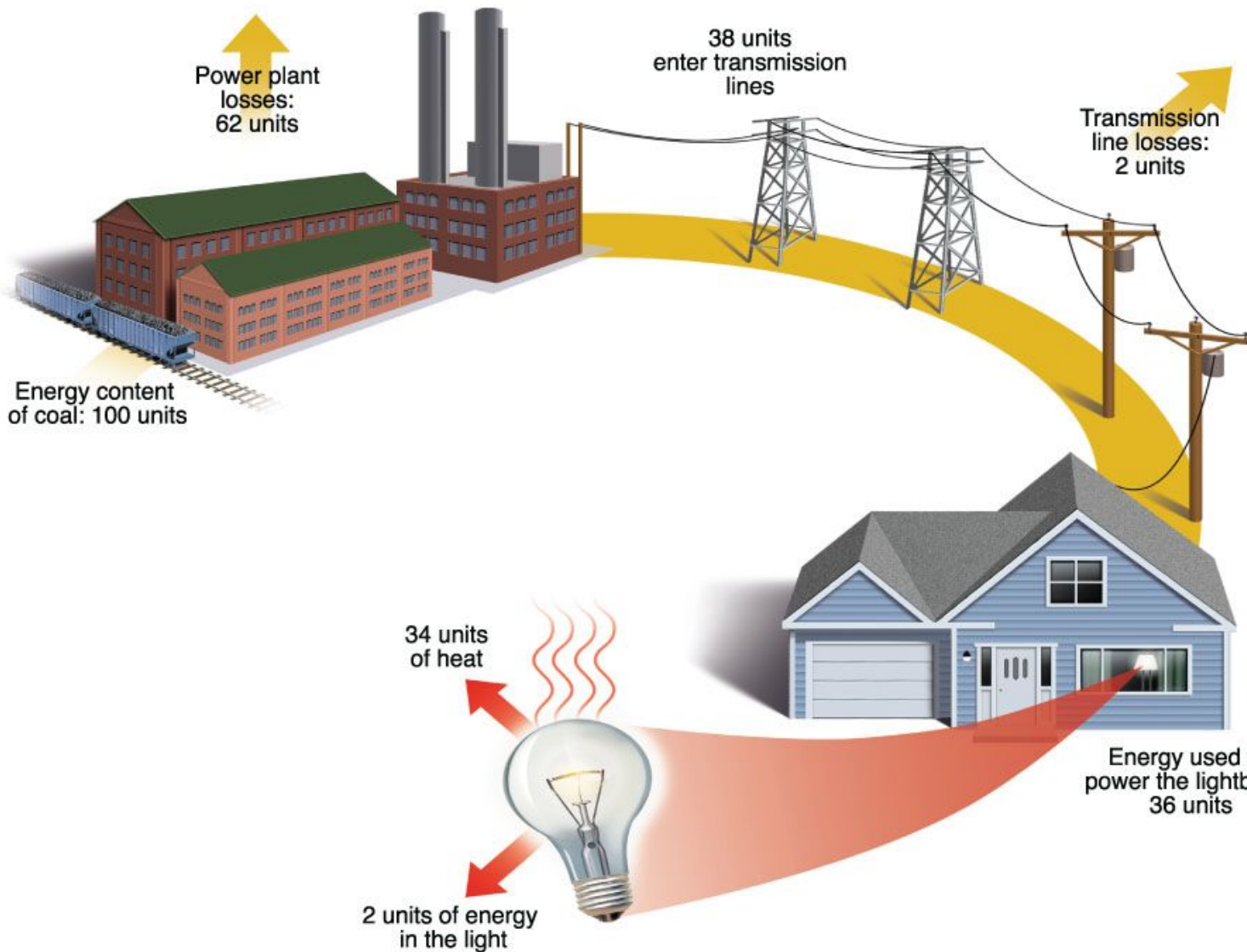


How Do You Label Electrical Energy Amounts Like Electrical Energy?

Detail Introduction :

How Do You Label Electrical Energy Amounts Like Electrical Energy?



Whether you are using electrical energy or other forms of energy, it is important to label them properly. When forms of energy are converted into other forms, such as heat and light. In this article, we'll discuss the differences between the two. Using the appropriate terminology is essential to avoid confusion and understand your electricity bills. In the meantime, you can use the Energy Star program to help you learn about the types of appliances that use different forms of energy and label them.

A common question that arises when looking at energy labels is how you label energy amounts. Most products have an energy efficiency rating that shows how much electricity it uses over a set number of uses or cycles. In kilowatt-hours, this amount can vary by appliance. It's important to learn how energy efficiency ratings work and which ones are most relevant to you. Depending on the type of energy you are labeling, you may need to ask an expert or ask for a copy of the product.

To understand how to label energy amounts, you must know the definition of "power." It's the amount of electricity a product consumes over a specified number of uses or cycles. It's important to remember that electricity from a power plant cannot power a light bulb or a computer. However, a label can help you understand how it's created and which energy source is best for a specific purpose.

Energy labels can be confusing. Many of them are hard to read and understand, so it's important to understand what the numbers mean. It cannot be easy to tell which appliances use the most electricity. In addition, they can vary across countries. It's important to understand what the numbers mean so that you can choose an appliance that suits your needs. By understanding how the labels are calculated, you can make an educated decision.

An energy label should show the amount of electricity consumed. For example, if an appliance uses electricity, it will state how much electricity it uses over a certain number of cycles or uses. It will also list the number of kilowatts that it consumes. Ultimately, the label is the most important tool in the purchasing process. Consumers will know how to use an appliance that is easy to understand, and it will save them money in the long run.

Labels for electrical and gas appliances include information about the amount of electricity they use. The label will show how much electricity it uses during a specific period, and it will show the number of cycles. The energy efficiency rating will be in kilowatt-hours, and the size will be reflected in its size. The amount of electricity used will also be displayed on the label, as this will be the most accurate indicator of the appliance's performance.

Many consumers are concerned about their electricity consumption. The Energy Guide program makes it easy to compare different products. Its labels are based on a comparison of similar-sized and feature-wise appliances. The labels also show a graph that gives an idea of the energy used by similar appliances. If you're not sure about the energy efficiency of your appliance, read the reviews on it and make an informed decision. In addition to the energy efficiency rating, some manufacturers require a label to indicate its energy consumption. This will let you know how much electricity your appliances use. If you want to make smarter decisions about the size of your appliance, you can look for an Energy Guide label. Moreover, the rating will give you a comparison of how much electricity it uses compared to similar models. These comparisons are crucial for ensuring you choose the right one.

In addition to this, you should also check out the Energy Guide label. These labels will help you compare various appliances regarding their energy efficiency. The label should also include other details of the

appliances, such as their capacity and model. This information will help you make informed decisions which one to buy. It is vital to check out the Energy Guide to make smart decisions. It will help you make an informed decision about the size of your appliance.